

BRINKLEY RV LLC

Bedroom Slide Out Leak Repair

CSC2303

Notification Date 2-8-23

TOOLS NEEDED-

SCREW GUN WITH A SQUARE BIT.

BLUE BONE

5IN1

TAPE MEASURE

UTILITY KNIFE

PARTS NEEDED-

4IN. OF 100996 FOAM TAPE BLK. PER SIDE

3FT OF 101751 BUTYL TAPE PER SIDE

REPAIR TIME: .5 PER SIDE

FLAT RATE CODE: CSC-2303





Run the bedroom slide to the out position.

Remove the screws out of the bottom rail of the slide out.

Operate the room back in 6-8 inches.

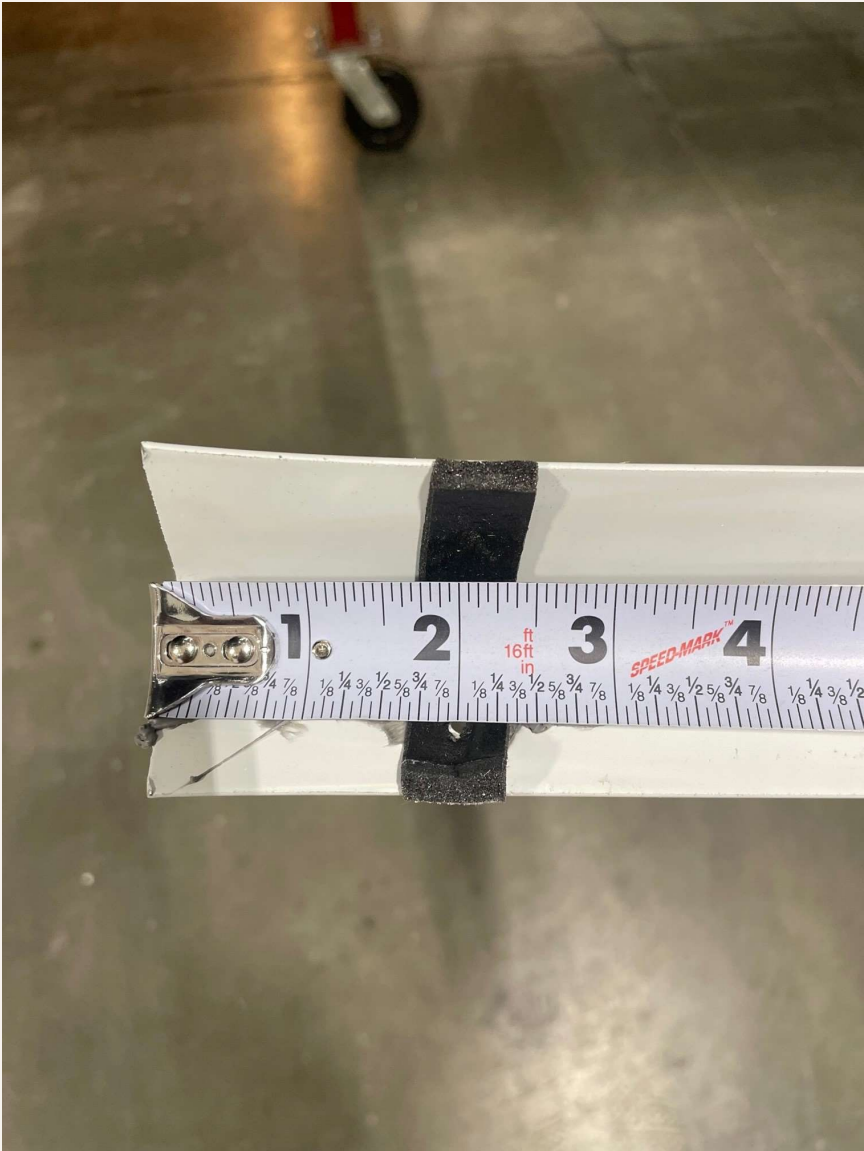


Open the closet and remove the screws that were behind the wipe seal.

Then operate the room out completely.



Using the blue bone and the 5in1, gently pry the rail off.
Once you get it started, you can cut through the butyl and pull the rail off completely.



Once you have the rail off add about 3" of 100996 to the end of the rail that will be closest to the inside fascia 1 $\frac{3}{4}$ " from the end. Add butyl tape 101751 to the rail and reinstall it back in place. Insert the screws to secure it you may need to tap the trim with a dead blow to form back to its original shape. Repeat these steps on the opposite side.