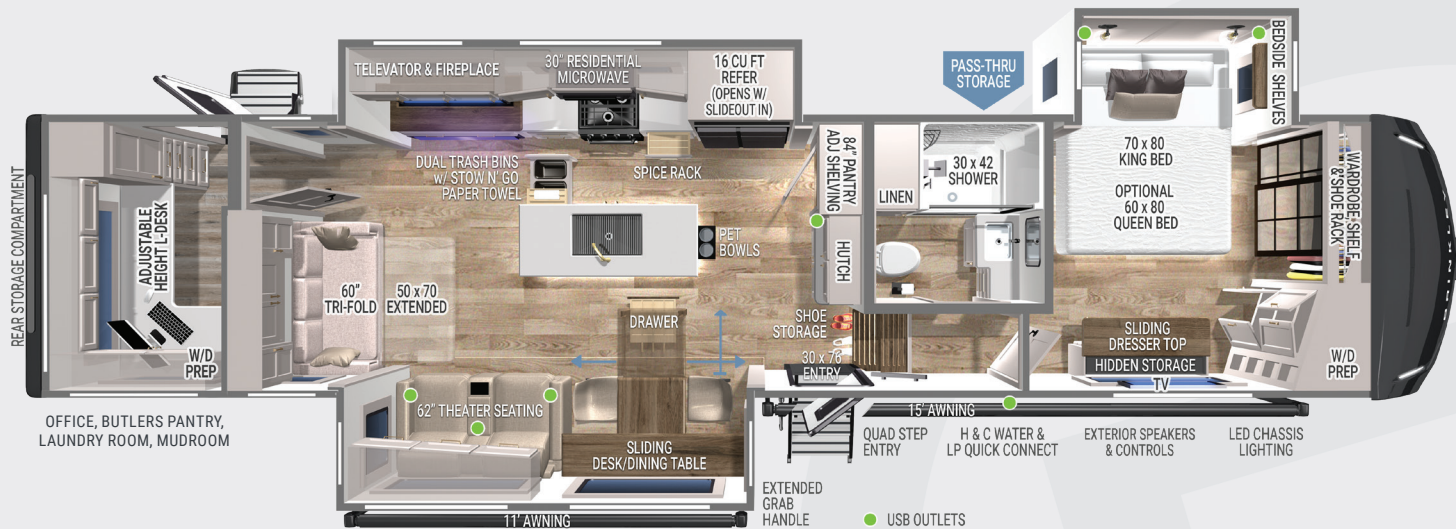


MODEL Z 3515

Standard Run MSRP \$120,916



SPECIFICATIONS:

- UVW – 13,838 lbs.
- GVWR – 17,495 lbs.
- Hitch Weight – 2,525 lbs.
- Exterior Length – 39' 11"
- Overall Height w/ AC – 13' 5"
- Width – 96"
- Bath & Bedroom Height - 79 ½"
- Slide Height - 76"
- Wheels & Tires – 17.5" H-Rated (16 ply)
- Fresh Water Capacity – 75 gal
- Gray Water Capacity – True 90+40 gal
- Black Water Capacity – 45 gal
- Insulation – Floors R40, Walls R11, Ceiling R40

FEATURES:

- Sliding Desk/Dining Table w/ Extending Leaves & Storage Drawer (Seats up to 4)
- 84" Pantry w/ Adjustable Shelves & Appliance Outlet
- Brinkley CraftSense™ Wood Trim Construction
- Premium Residential Cabinets & Drawers w/ Dovetail Joints
- Kitchen & Living Room/Dining Room Flush Floor Slides
- Pull-Out Pet Feeder w/ Removable Bowls
- Bedside Shelves & Outlets w/ USB & USB-C
- Hidden Sliding Dresser Top Storage Compartment
- Tip-To-Clean Quad Entry Steps
- Square Euro Frameless Windows w/ 6" Openings
- Integrated Window Screens & Insulated Blackout Blinds (No Valances)
- Automotive Grade Front Cap, Lights, & Lens
- Sleek & Clean Styling w/ Automotive-Grade Exterior Graphics
- 13.5k Front AC w/ Heat Pump
- Furrion 18k Chill® Cube Rear AC
- 2 - Hot/Cold Outdoor Showers (BOTH sides of coach)
- Wide Stance Hydraulic Leveling Jacks & Oversized Front Storage
- Built-in Wire Conduit from Roof to Basement
- Industry First Brass Plumbing Connections
- Industry First Low Maintenance Roof
- Basement Utility Access w/ Motion Lights
- Electric Waste Valves w/ Indicator Light & Manual-Override
- Heavy-Duty 8k lbs. Axles with 8k lbs. Leaf Springs
- 370W Solar Panel w/ 60 AMP MPPT Controller (Inverter Prep & Lithium Ready)

Multipurpose Flex Space Highlights:

- Electric Adjustable Height Solid Surface Countertop/Desk w/ 6 Outlets
- 60"x70" of Usable Floor Space Under Countertop
- Overhead Cabinets & Floor to Ceiling Cabinet w/ Drawers
- Dual Washer/Dryer Prep (Combo/Side-by-side in Flex Space, Stackable/Combo in Bedroom)
- Off-Camp Side Second Entry Door

FACTORY OPTIONS:

- Queen Bed w/ Nightstands \$428
- Dual Pane Windows \$1,731

Optional equipment & props may be shown.
All content is subject to change without notice.
Please consult with your dealer for current information.



For More Information, MSRP, Photos,
Videos & Why Brinkley go to BrinkleyRV.com

